



Fiber–cement ventilated facades

Natural Fiber–cement boards are used as cladding material for ventilated facades mostly on residential and administrative buildings. This cladding material is characterized by great color variety, easy maintenance, long lifetime period and fast installation during the whole year.

1) COLOR

Complete offer of cladding material in wide range of color samples can be provided upon customer request.

2) FORMATS

The basic production dimensions are 1200 x 2500 mm and 1200 x 3050 mm in thickness 6 and 8 mm.

3) SURFACE

The cladding boards are supplied, as a standard, with hydrophobic surface finish.



4) WAY OF FIXING AND DETAILS

Fiber–cement boards are fixed by gluing or riveting.

5) FLAMMABILITY

According to CSN 73 0810/ 2016: A2, s1-d0

For more information contact Triangel company.

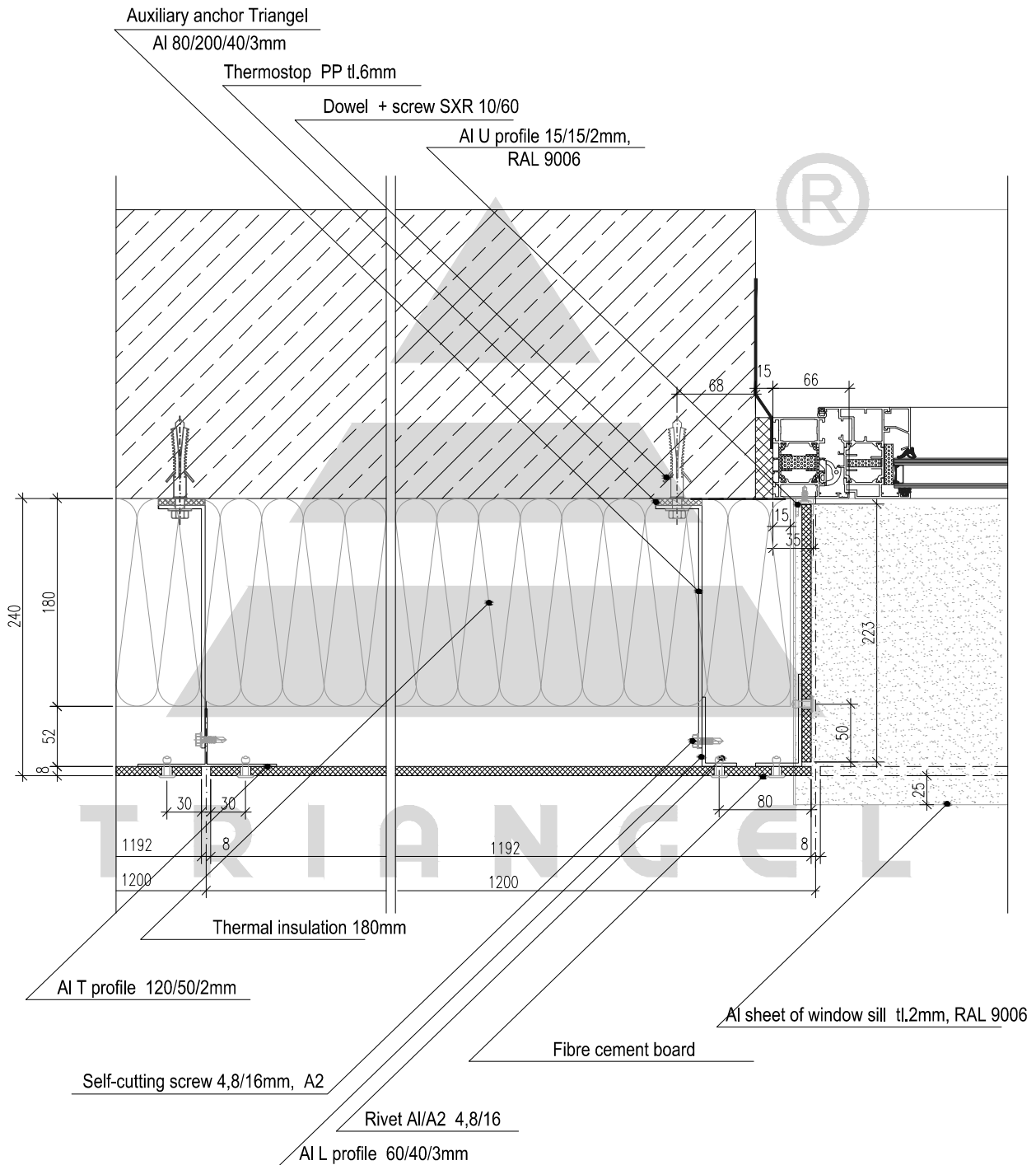
Triangel spol. s r.o.
Černokostecká 2085/24
100 00 Praha 10
Czech Republic

IČO: 65410777, DIČ: CZ65410777

+420 261 217 774
trangel@triangel.cz
WWW.TRIANGEL.CZ

**Complete supply
of ventilated facades**

Detail of window reveal



Triangel spol.s.r.o. keramika - přírodní kámen, kompletní dodávky fasád, dlažby, obklady
Černokostecká 2085/24, 100 00 Praha 10 www.triangel.cz tel/fax: +420 261 217 774

Vypracoval:

Měřítko: 1:5

Datum:

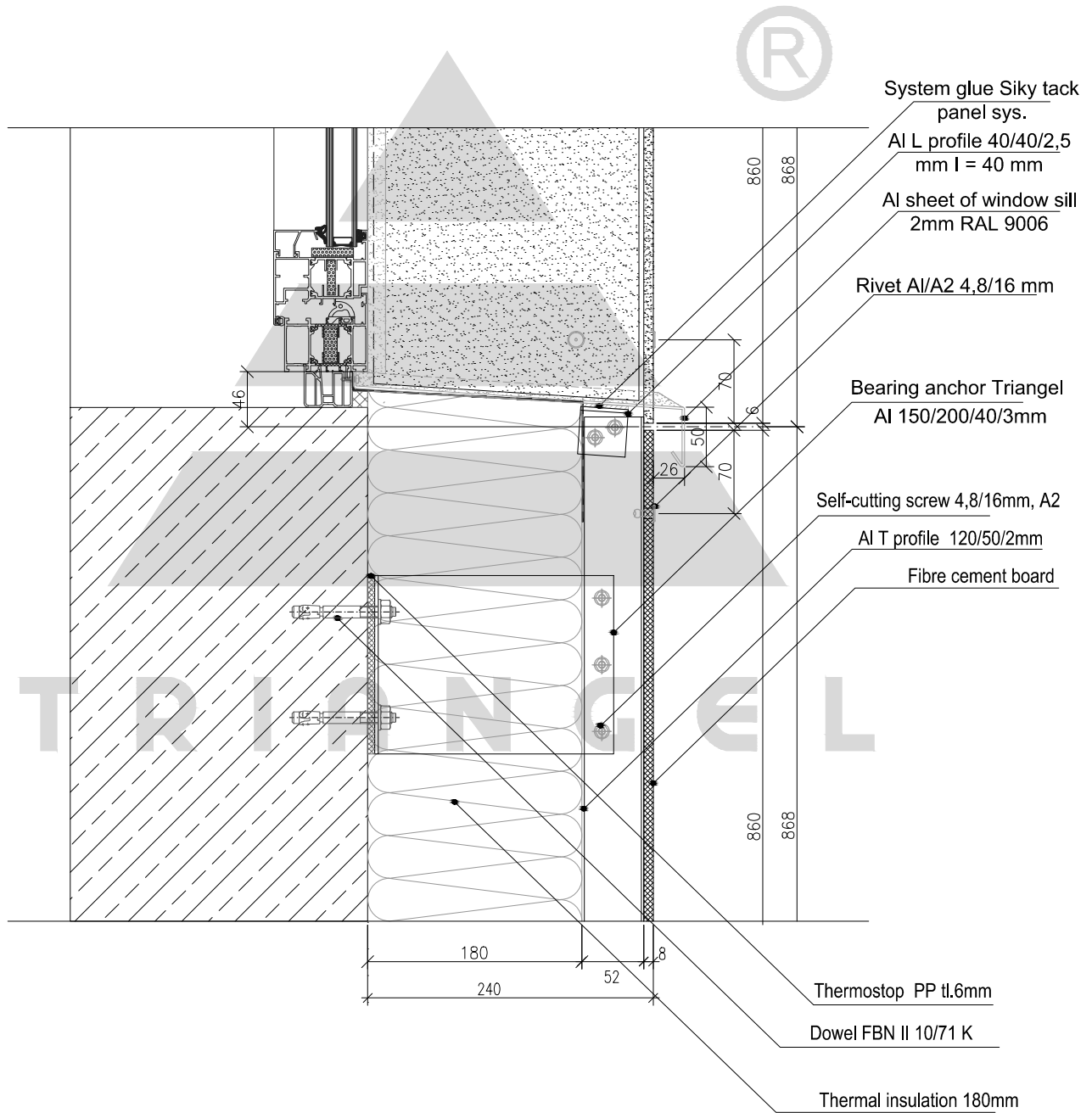
Název akce:


Název výkresu:

Výkr.č.

Visible fixing by riveting
Detail of window reveal

Detail of windows sill



	Triangel spol.s.r.o. keramika - přírodní kámen, kompletní dodávky fasád, dlažby, obklady Černokostelecká 2085/24, 100 00 Praha 10 www.triangel.cz tel/fax: +420 261 217 774		
	Vypracoval:	Měřítko: 1:5	Datum:
Název akce:	Název výkresu: Visible fixing by riveting - Fibre cement board Detail of window sill		Výkr.č.